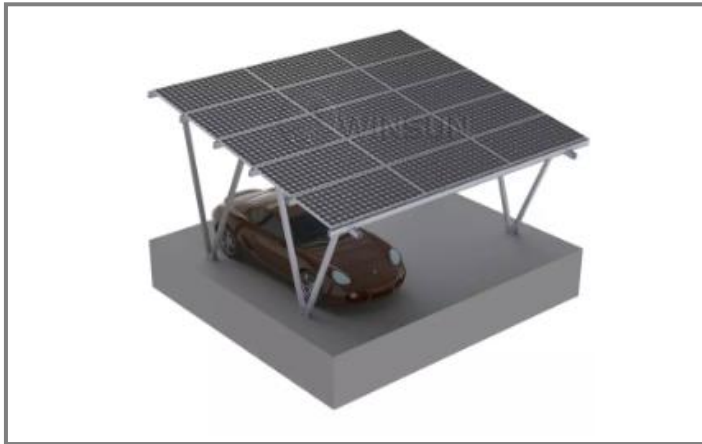
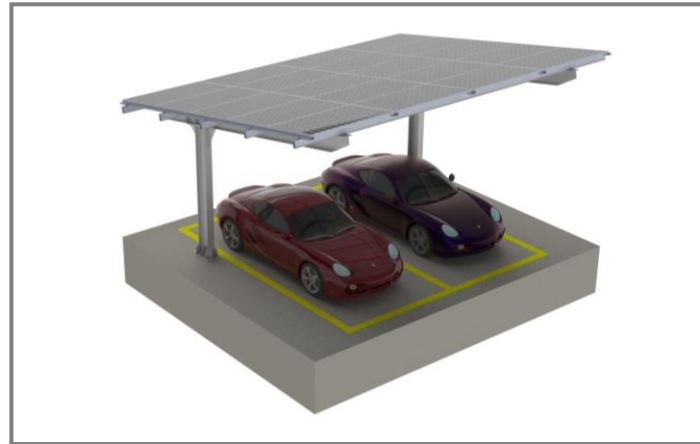


## SOLAR CAR PARK CANOPIES - TRADE

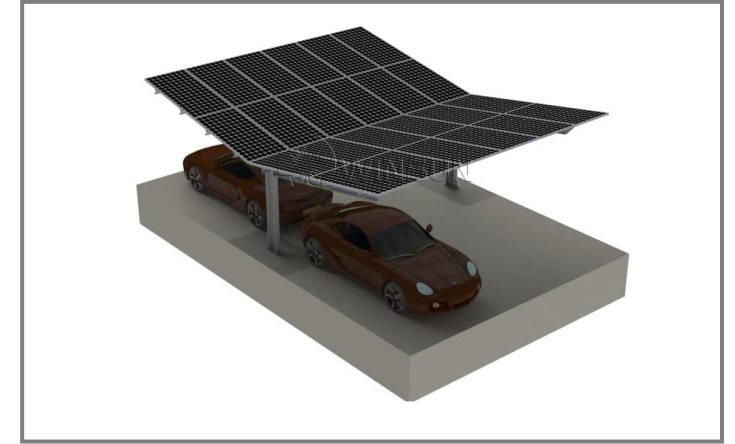
## CANOPY VARIATIONS



Aluminium Mounting System



Steel Mounting System – Single Pole



Steel Mounting System – Y-shaped

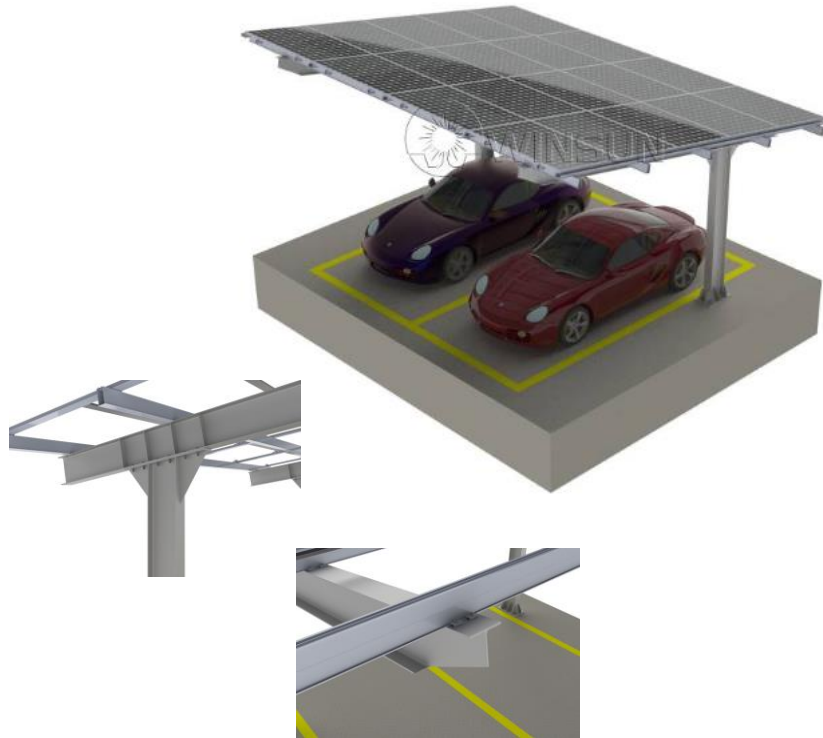
## CARBON STEEL SINGLE POLE MOUNTING SYSTEM



A single-pole solar car park system, constructed from high-strength carbon steel with a hot-dip galvanized surface treatment providing enhanced structural stability and excellent corrosion resistance.

Wind Load 60m/s  
Snow Load 2kn/m<sup>2</sup>  
Material Q235B & SUS304  
Warranty 15 years

## WATERPROOF GALVANIZED STEEL MOUNTING SYSTEM



A galvanized steel support structure providing robustness and longevity for clients.

An aluminium waterproof top facilitates quick and easy installation for PV panels, offering excellent water resistance.

With a long-edge installation this versatile design accommodates various PV panel sizes.

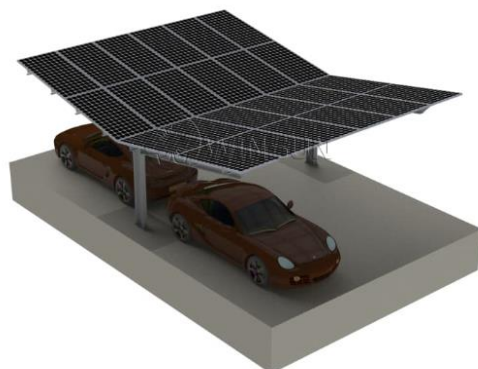
Wind Load 60m/s  
Snow Load 2.5kn/m<sup>2</sup>  
Material Q235B Aluminium 6005-T5 & SUS304 Stainless Steel  
Warranty 15 years

## GALVANIZED STEEL Y-SHAPED MOUNTING SYSTEM



Simple in its design, this steel mounting system has single poles and maximises car parking space.

Wind Load 60m/s  
Snow Load 2kn/m<sup>2</sup>  
Material Q235B & SUS304  
Warranty 15 years



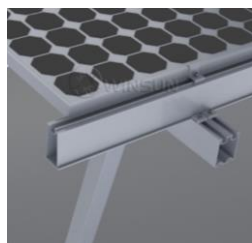
## ALUMINIUM MOUNTING SYSTEM COMMERCIAL & RESIDENTIAL



Suitable for commercial and residential use, the canopy height, parking space layout, and the installation angle, can all be customized.

This aluminium structure, arrives pre-assembled to the maximum extent thus making installation faster and more convenient for your client.

Wind Load	60m/s
Snow Load	2kn/m <sup>2</sup>
Material	Aluminium 6005-T5 & SUS304 Stainless Steel
Warranty	15 years



## HIGH-STRENGTH MOUNTING SYSTEM WITH UPGRADED LOAD CAPACITY



This is a new design with increased load capacity and with a snow load resistance up to 3.5kn/m<sup>2</sup>

A structural waterproof design with the PV panels serving as the top cover enhancing the overall aesthetics. The aluminium structure is pre-assembled to the maximum extent to speed up the install time

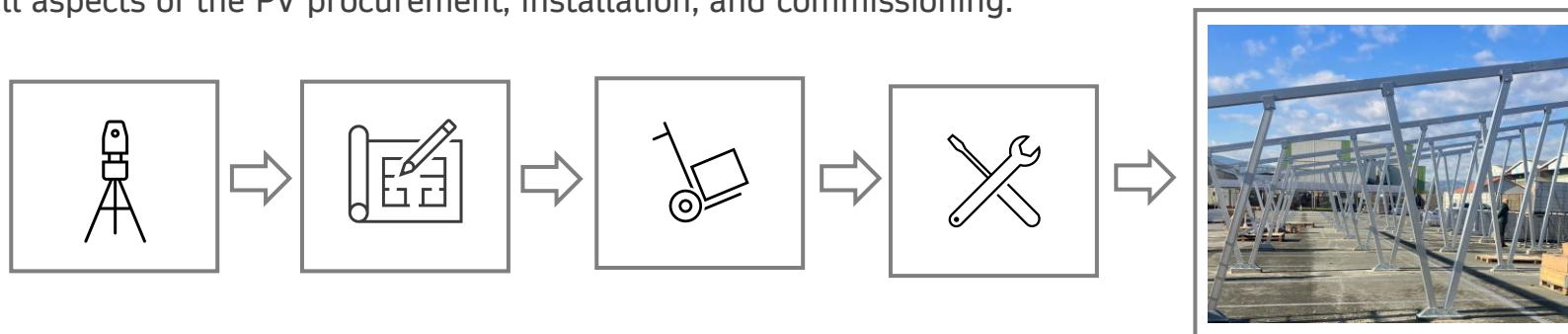
Wind Load	60m/s
Snow Load	3.5kn/m <sup>2</sup>
Material	Aluminium 6005-T5 & SUS304 Stainless Steel
Warranty	15 years

## SERVICE LEVELS AVAILABLE

**Option 1) Design and supply** of the canopy, ready for the customer to complete all aspects of the canopy groundworks and construction.



**Option 2) Survey, design, supply, and installation** of the canopy (inc. groundworks), ready for the customer to complete all aspects of the PV procurement, installation, and commissioning.





## SOLAR UK

Solar UK is the exclusive UK distributor for the Winsun Solar range of solar car park canopies.

We welcome all enquiries.

**Solar UK - Head Office & Manufacturing**  
**Vantage Point**  
**North Trade Road**  
**Battle**  
**East Sussex**  
**TN33 9LJ**

**01424 772903**

**sales@solaruk.com**  
**solaruk.com**

