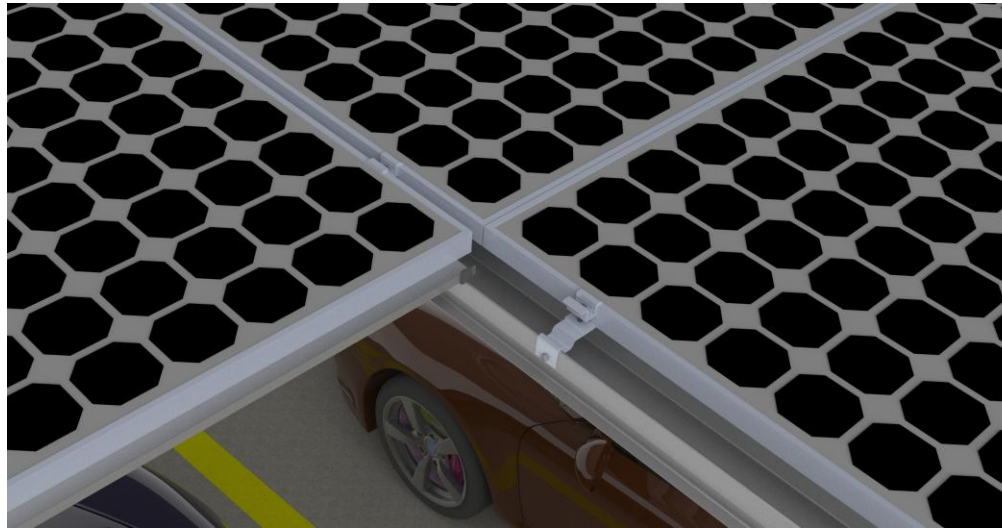


## SOLAR CAR PARK CANOPIES – TO THE TRADE



Solar car park canopies can help generate additional power when, for example, the roof space on a building has been used for solar PV already, but more generation is required, or perhaps the roof itself is not fit for a solar mounting system.

From a single bay to multiple canopies across a commercial car park, Solar UK Winsun systems are tailored to your specific situation.

Available in both aluminium and galvanized steel, we offer variable pitch orientation and gullwing/Y-shaped design.  
Designed to EN1991-1-3 and EN1991-1-4 standards and CE-certified

The canopies can be designed to incorporate EV charging, battery energy storage, rainwater channel systems and LED lighting.

Our trade pricing is a simple **‘Canopy Design & Supply Only’** or **‘Canopy Survey, Design, Supply & Installation (inc. groundworks)’**

## TRADE SERVICE LEVELS AVAILABLE

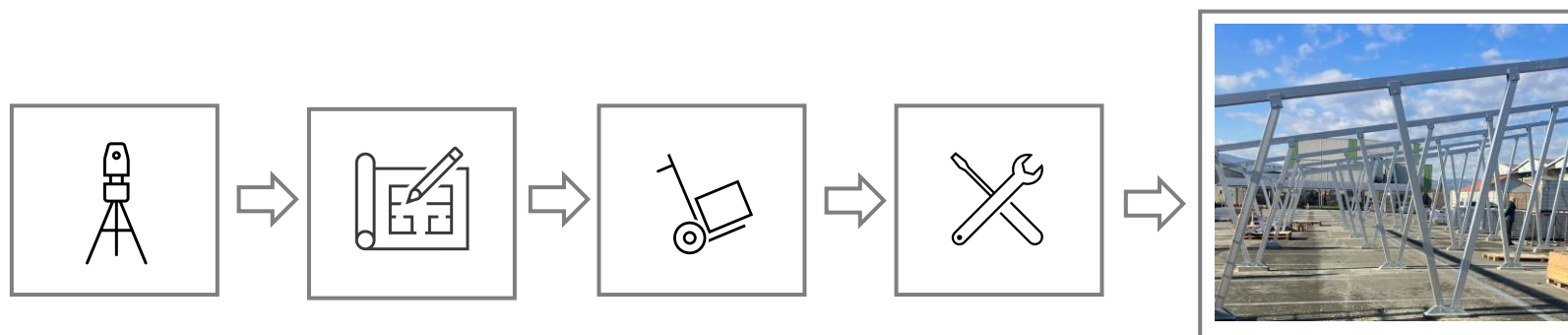
### Option 1) Canopy Design & Supply Only

ready for the customer to complete all aspects of the canopy installation (inc. groundworks), solar installation and commissioning



### Option 2) Canopy Survey, Design, Supply & Installation (inc. groundworks)

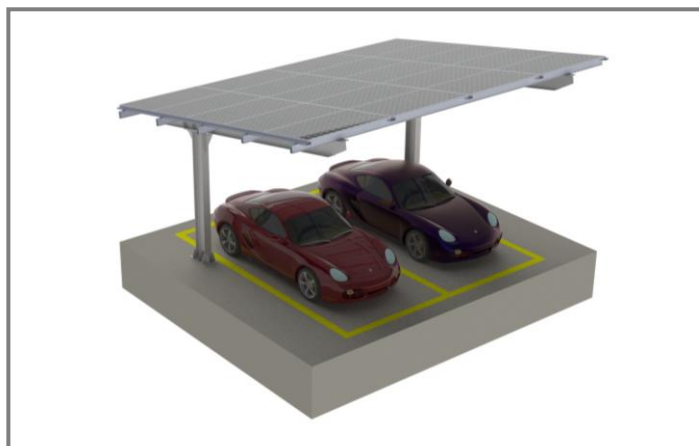
ready for the customer to complete all aspects of the solar installation and commissioning.



## CANOPY VARIATIONS



Aluminium Mounting System



Steel Mounting System – Single Pole



Steel Mounting System – Y-shaped

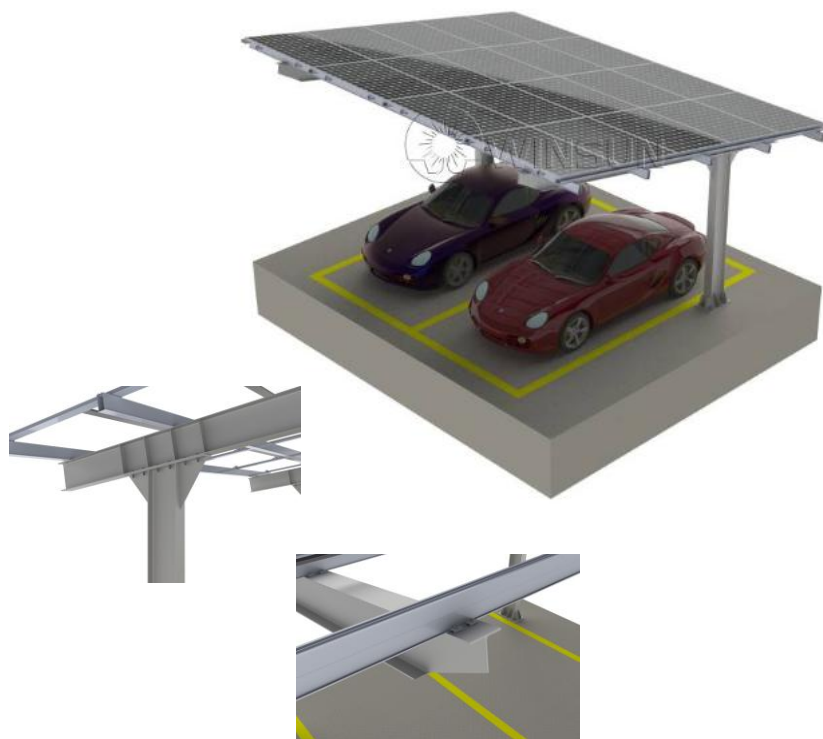
## CARBON STEEL SINGLE POLE MOUNTING SYSTEM



A single-pole solar car park system, constructed from high-strength carbon steel with a hot-dip galvanized surface treatment providing enhanced structural stability and excellent corrosion resistance.

Wind Load	60m/s
Snow Load	2kn/m <sup>2</sup>
Material	Q235B & SUS304
Warranty	15 years

## WATERPROOF GALVANIZED STEEL MOUNTING SYSTEM



A galvanized steel support structure providing robustness and longevity for clients.

An aluminium waterproof top facilitates quick and easy installation for PV panels, offering excellent water resistance.

With a long-edge installation this versatile design accommodates various PV panel sizes.

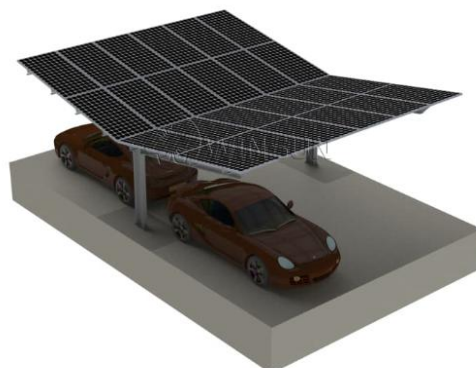
Wind Load	60m/s
Snow Load	2.5kn/m <sup>2</sup>
Material	Q235B Aluminium 6005-T5 & SUS304 Stainless Steel
Warranty	15 years

## GALVANIZED STEEL Y-SHAPED MOUNTING SYSTEM

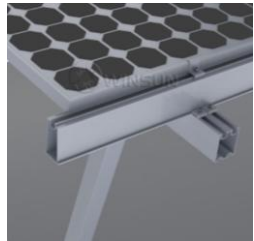


Simple in its design, this steel mounting system has single poles and maximises car parking space.

Wind Load	60m/s
Snow Load	2kn/m <sup>2</sup>
Material	Q235B & SUS304
Warranty	15 years



## ALUMINIUM MOUNTING SYSTEM COMMERCIAL & RESIDENTIAL



Suitable for commercial and residential use, the canopy height, parking space layout, and the installation angle, can all be customized.

This aluminium structure, arrives pre-assembled to the maximum extent thus making installation faster and more convenient for your client.

Wind Load	60m/s
Snow Load	2kn/m <sup>2</sup>
Material	Aluminium 6005-T5 & SUS304 Stainless Steel
Warranty	15 years



## HIGH-STRENGTH MOUNTING SYSTEM WITH UPGRADED LOAD CAPACITY



This is a new design with increased load capacity and with a snow load resistance up to  $3.5\text{kn/m}^2$

A structural waterproof design with the PV panels serving as the top cover enhancing the overall aesthetics. The aluminium structure is pre-assembled to the maximum extent to speed up the install time

Wind Load	60m/s
Snow Load	$3.5\text{kn/m}^2$
Material	Aluminium 6005-T5 & SUS304 Stainless Steel
Warranty	15 years

## SOLAR UK

Solar UK is the exclusive UK distributor for the Winsun Solar range of solar car park canopies.

We welcome all trade enquiries.

**Solar UK - Head Office & Manufacturing**  
**Vantage Point**  
**North Trade Road**  
**Battle**  
**East Sussex**  
**TN33 9LJ**

**01424 772903**

**sales@solaruk.com**  
**solaruk.com**

