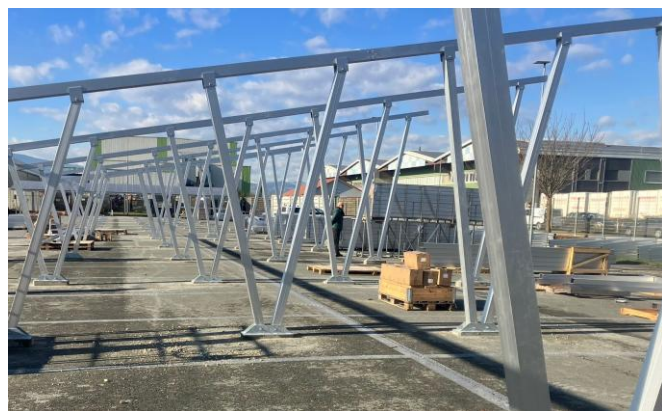


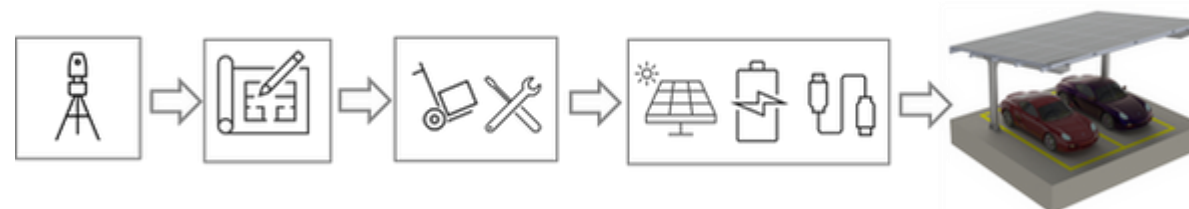
SOLAR CAR PARK CANOPIES

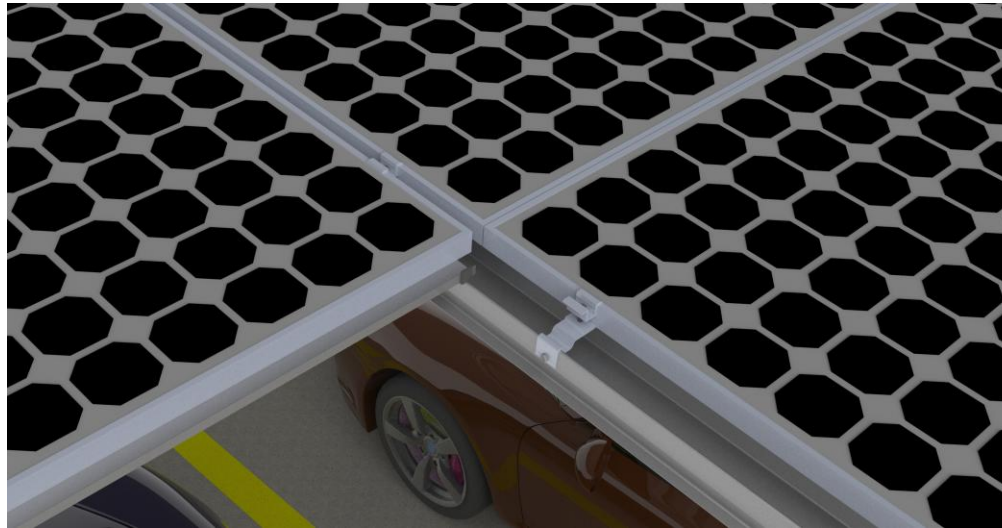
SURVEY, DESIGN, SUPPLY & INSTALLATION



Solar car park canopies generate significant solar power (c.5-6kWp per 2 bays). As a turnkey solution our customers benefit from a fully commissioned solar canopy installation that is designed to maximise their space and deliver the outcomes they are looking to achieve.

We survey, design, deliver, construct, install, and commission the complete canopy and solar project.





Solar car park canopies can help generate additional power when, for example, the roof space on your building has been used for solar PV already, but you still need more, or perhaps the roof itself is not fit for a solar mounting system.

From a single bay to multiple canopies across a commercial car park, our systems are tailored to your specific situation.

Available in both aluminium and galvanized steel, which can be painted in a RAL colour of choice, we offer variable pitch orientation and gullwing/Y-shaped design. Designed to EN1991-1-3 and EN1991-1-4 standards and CE-certified.

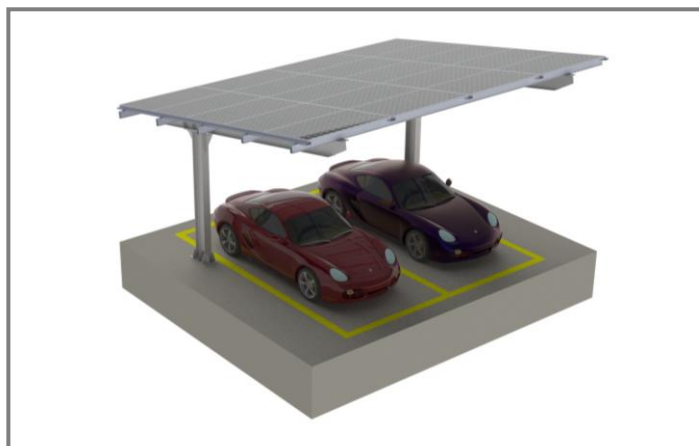
The canopies can be designed to incorporate EV charging, battery energy storage, rainwater channel systems and LED lighting.

Once we understand our client's desired outcome, we will submit a design (structural and solar) specification and quote. Our designs include groundworks, structural build, solar installation and commissioning.

CANOPY VARIATIONS



Aluminium Mounting System

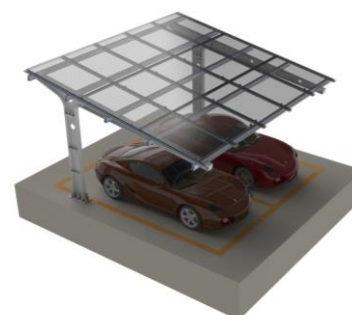
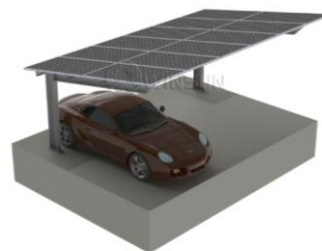


Steel Mounting System – Single Pole



Steel Mounting System – Y-shaped

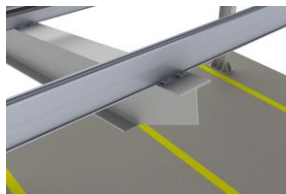
CARBON STEEL SINGLE POLE MOUNTING SYSTEM



A single-pole solar canopy, constructed from high-strength carbon steel with a hot-dip galvanized surface treatment providing enhanced structural stability and excellent corrosion resistance.

Wind Load 60m/s
Snow Load 2kn/m²
Material Q235B & SUS304
Warranty 15 years

WATERPROOF GALVANIZED STEEL MOUNTING SYSTEM



A galvanized steel support structure providing robustness and longevity for clients.

An aluminium waterproof top facilitates quick and easy installation for PV panels, offering excellent water resistance.

With a long-edge installation this versatile design accommodates various PV panel sizes.

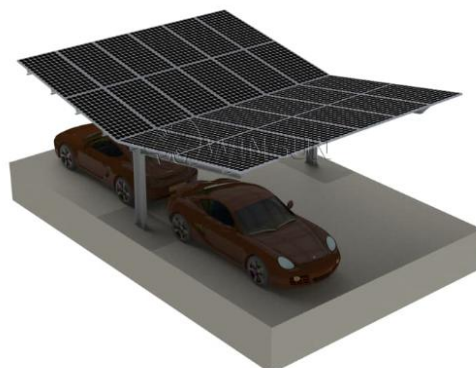
Wind Load	60m/s
Snow Load	2.5kn/m ²
Material	Q235B Aluminium 6005-T5 & SUS304 Stainless Steel
Warranty	15 years

GALVANIZED STEEL Y-SHAPED MOUNTING SYSTEM



Simple in its design, this steel mounting system has single poles and maximises car parking space.

Wind Load	60m/s
Snow Load	2kn/m ²
Material	Q235B & SUS304
Warranty	15 years

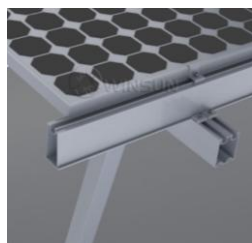


ALUMINIUM MOUNTING SYSTEM COMMERCIAL & RESIDENTIAL



Suitable for commercial and residential use, the canopy height, parking space layout, and the installation angle, can all be customized.

Wind Load	60m/s
Snow Load	2kn/m ²
Material	Aluminium 6005-T5 & SUS304 Stainless Steel
Warranty	15 years



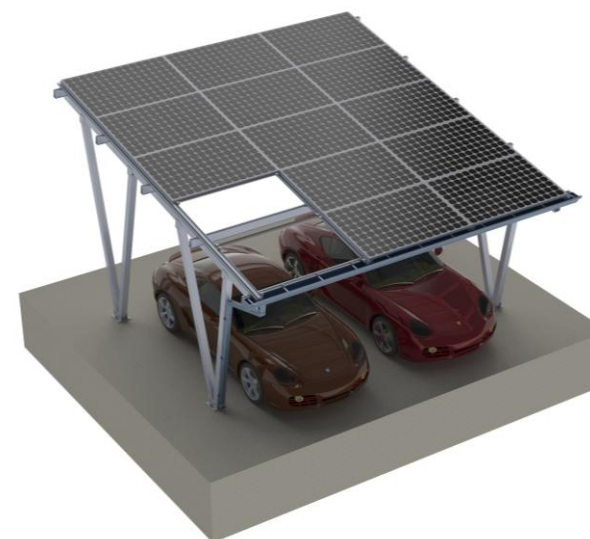
HIGH-STRENGTH MOUNTING SYSTEM WITH UPGRADED LOAD CAPACITY



This is a new design with increased load capacity and with a snow load resistance up to 3.5kn/m^2

A structural waterproof design with the PV panels serving as the top cover enhancing the overall aesthetics.

Wind Load	60m/s
Snow Load	3.5kn/m^2
Material	Aluminium 6005-T5 & SUS304 Stainless Steel
Warranty	15 years



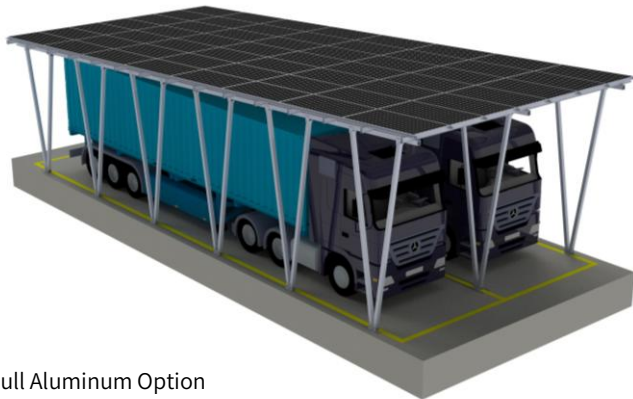
OPTIONAL EXTRAS

The canopies can be designed to incorporate EV charging, battery energy storage and LED lighting.

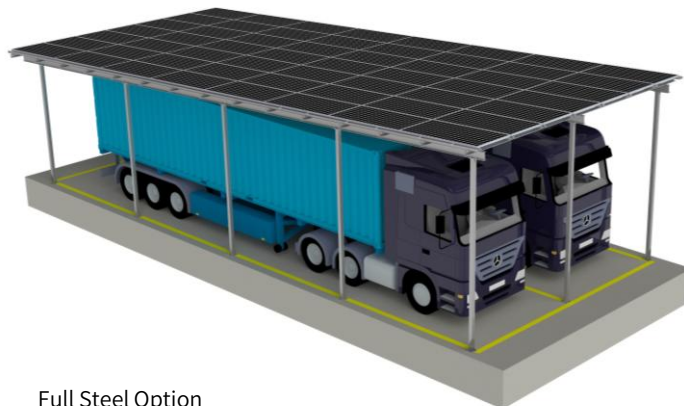
A very important consideration is efficient rainwater management. We believe it is crucial for long-term performance and durability. Our solar carport systems can be equipped with an optional drainage system



SOLAR HGV CANOPIES FOR COMMERCIAL CUSTOMERS



Full Aluminum Option
(support structure and waterproof top made of aluminum)



Full Steel Option
(support structure and waterproof top made of steel)

The fundamentals of our solar HGV canopy is largely similar to our standard car canopy range.

HGVs require a different approach to canopy design, simply due to their size. We work with our customers to design canopies that are both practical and functional allowing for suitable driver access

While this may slightly affect parking convenience, we can address this by considering the option of widening the parking spaces, which would help improve vehicle access and maximize the use of space for larger vehicles.



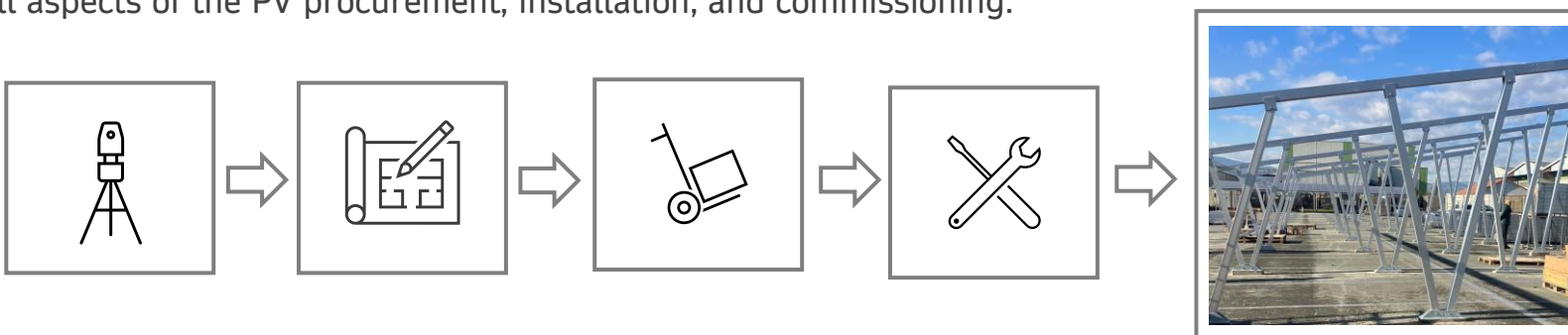
The main differences lie in the sink design and column design.

TRADE-ONLY SERVICE LEVELS

Option 1) Design and supply of the canopy, ready for the customer to complete all aspects of the canopy groundworks and construction.



Option 2) Survey, design, supply, and installation of the canopy (inc. groundworks), ready for the customer to complete all aspects of the PV procurement, installation, and commissioning.



SOLAR UK

Solar UK is the exclusive UK distributor for the Winsun Solar range of solar car park canopies.

We welcome all enquiries.

Solar UK - Head Office & Manufacturing
Vantage Point
North Trade Road
Battle
East Sussex
TN33 9LJ

01424 772903

sales@solaruk.com
solaruk.com

